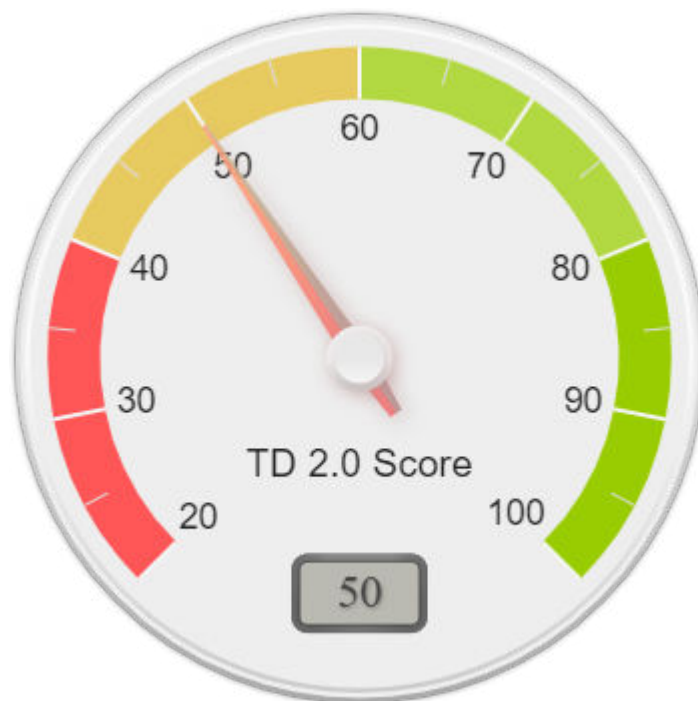




Tech Debt 2.0[®] Diagnostic

Evaluation for: Tech Debt 2.0 Book

Powered by: *SimpleBenchmarks LLC*



Excellent - (80 - 100) Tech debt is being proactively managed jointly by the business and IT with strong focus on innovation and customer experience while maintaining operational excellence

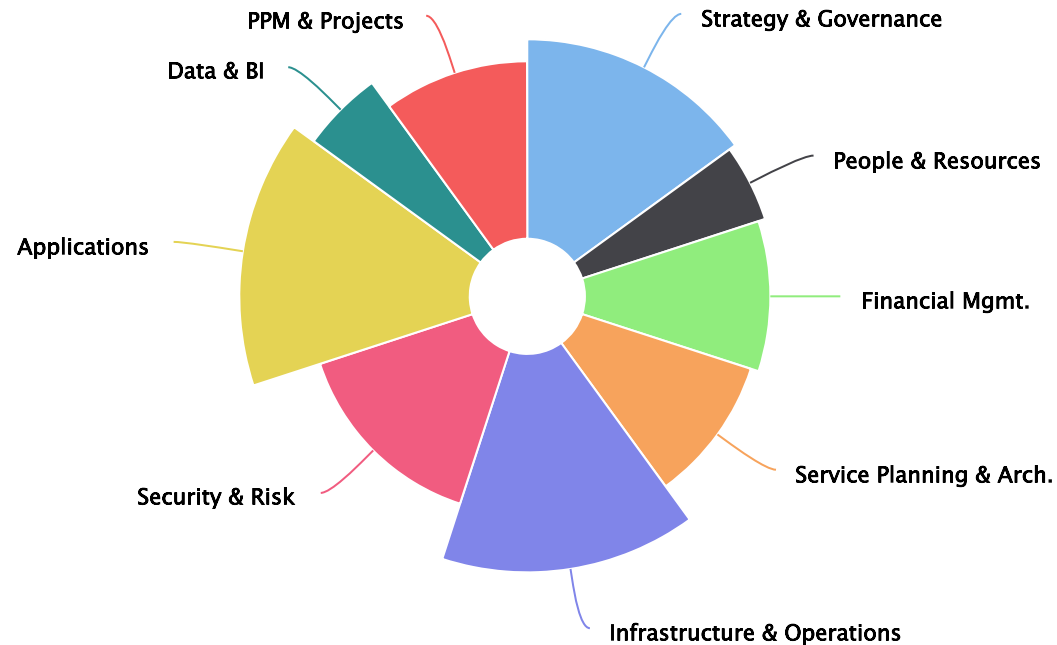
Good - (60 - 79) Tech debt is proactively managed jointly by the business and IT and shows little or no negative impact on business performance

Fair - (40 - 59) Tech debt management is a mix of reactive and proactive, is led by IT and shows some signs of negative impact on business performance

Poor - (20 - 39) Tech debt is reactively managed by IT and has significant impact on business performance

Breakdown By Section

Ratings and Importance Weights



The width of the piece of the pie represents the importance weight we apply to that assessment category. The length of the piece of pie represents the average of how highly you rated questions from that assessment category.